



9 Bethania Street, Glynneath, Neath, SA11 5DE

Offers In The Region Of £79,950

Offering clear potential for improvement and reimagining, this terraced home presents an exciting opportunity for buyers looking to create a space of their own in the heart of Glynneath. With a traditional layout and generous proportions throughout, the property lends itself well to renovation and modernisation while already providing the foundations for comfortable everyday living.

The accommodation includes a lounge, a kitchen to the rear and a ground floor bathroom. Upstairs, there are three bedrooms with good natural light and scope to adapt to individual needs, whether for family life, home working or guest space. Outside, the enclosed patio garden offers a low maintenance setting with room for seating, planting or further enhancement over time.

Positioned within easy reach of the village centre, the property benefits from convenient access to local shops, cafés and everyday amenities, along with nearby schools and regular transport connections through the Neath Valley. The surrounding area is well known for its access to open countryside, woodland walks and waterfall trails within the Vale of Neath, making it a practical yet well connected location for those who enjoy the outdoors.

A property with genuine potential, well suited to builders, investors or buyers seeking a renovation project with long term appeal.

Main Dwelling



UPVC door into lounge

Lounge 18'8 x 12'9 (5.69m x 3.89m)



Laminate floor, fireplace, 2 x windows, coving and 2 x radiators



Kitchen 11'4 x 10'3 (3.45m x 3.12m)



Range of wooden base and wall units with coordinating counter tops, sink with drainer, electric hob and oven with extractor over, space for fridge, window and door to back



Bathroom 10'1 x 8'5 (3.07m x 2.57m)



White suite with bath with shower over, Low level w/c and pedestal sink, cushioned flooring, window to the back and radiator with two cupboards

Landing



Bedroom 1 12'9 x 10'9 (3.89m x 3.28m)



Laminate flooring, window to the front, storage cupboard

Bedroom 2 12'7 x 7'1 (3.84m x 2.16m)



Window to the front and radiator

Bedroom 3 12'6 x 7'4 (3.81m x 2.24m)



Window to the back and radiator

Garden



Paved areas, enclosed garden with garden shed



Drone



Agents Notes

Neath Port Talbot Council Tax Band: A

Annual Price:

£1,694

Agents Notes

Conservation Area :

No

Flood Risk:

River : High

Seas : Very low

Floor Area;

0 ft 2 / 0 m 2

Plot size:

0.03 acres

Mobile coverage:

EE

Vodafone

Three

O2

Broadband:

Basic:

17 Mbps

Superfast

80 Mbps

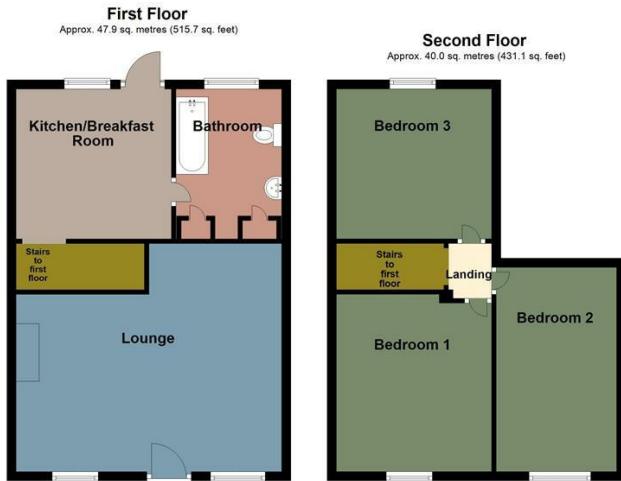
Satellite / Fibre TV Availability:

BT

Sky

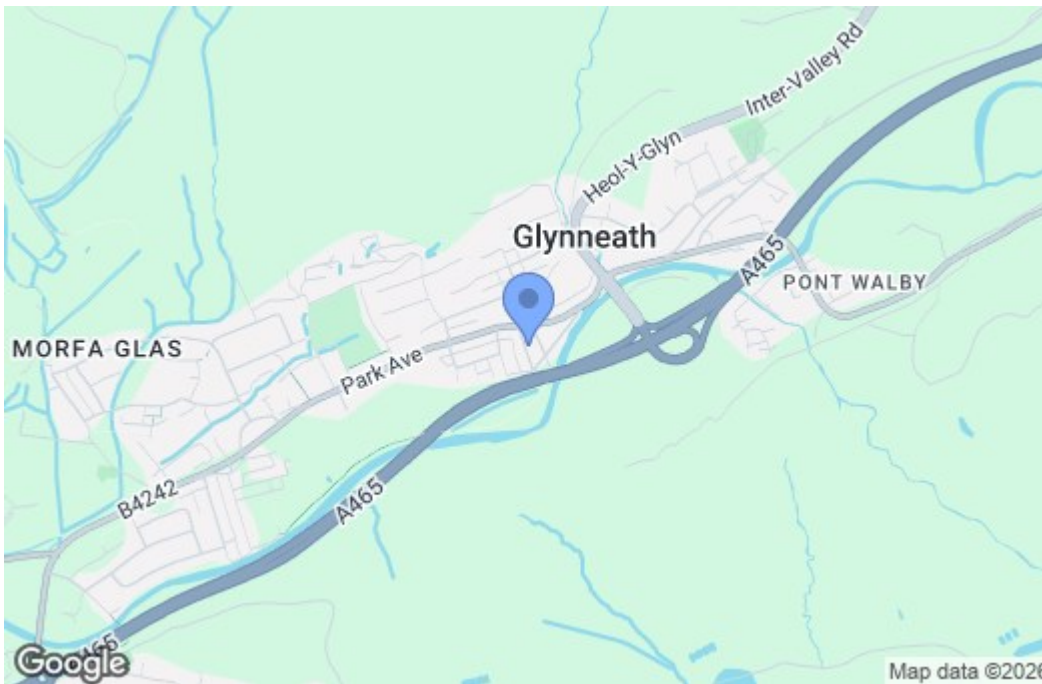
Virgin

Floor Plan

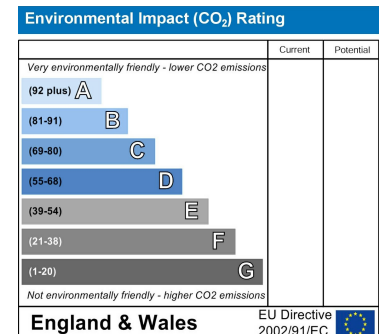
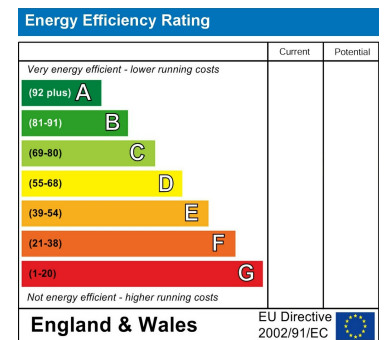


Total area: approx. 88.0 sq. metres (946.8 sq. feet)

Area Map



Energy Efficiency Graph



These particulars, whilst believed to be accurate are set out as a general outline only for guidance and do not constitute any part of an offer or contract. Intending purchasers should not rely on them as statements of representation of fact, but must satisfy themselves by inspection or otherwise as to their accuracy. No person in this firm's employment has the authority to make or give any representation or warranty in respect of the property.